

# WSX445-PROMOTION

LOW CUTTING RESISTANCE

NEXT GENERATION FACE MILLING CUTTER

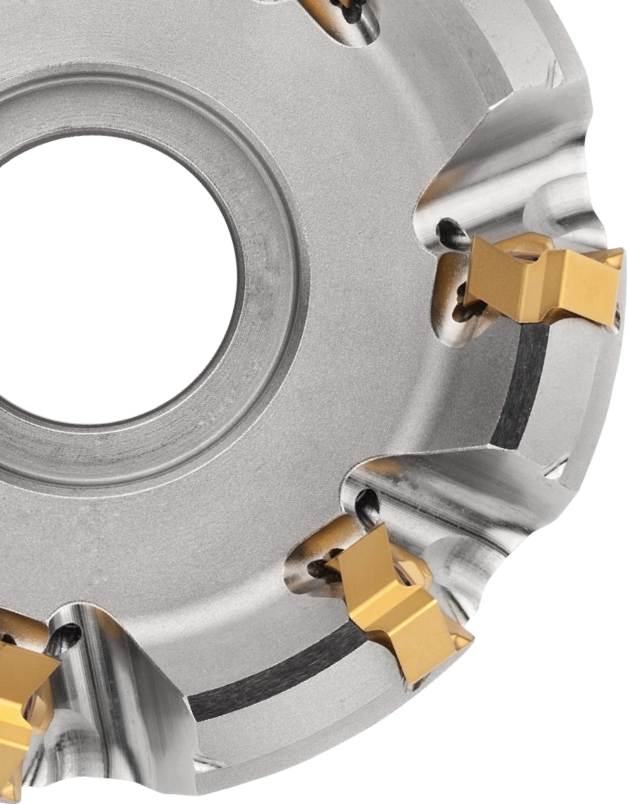
WITH DOUBLE SIDED INSERTS



**FREE**  
**FACE MILL CUTTER**  
 PURCHASE THE INDICATED INSERTS  
 LESS YOUR DISCOUNT  
 \*Until stocks last!

**46% PRICE ADVANTAGE\***  
**AND MORE...**  
 \*based on list prices.





## SUITABLE FOR ALL MACHINES

Positive insert geometry and low cutting resistance.  
Ideal for machines with low spindle power.

## 8 SHARP CUTTING EDGES

Increased productivity with more cutting edges.

## DOUBLE-Z GEOMETRY

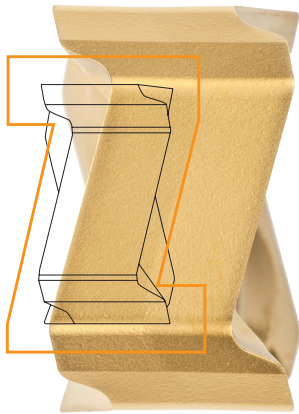
New double sided Z geometry inserts feature sharp cutting edges for low cutting resistance by combining features of conventional positive and negative rake inserts.

## THROUGH COOLANT HOLES

Standard through coolant holes in cutters under  $\varnothing 160$  mm.

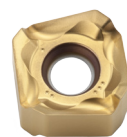
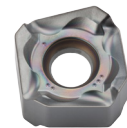
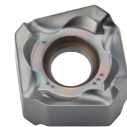
## INSERT GRADES

High Performance grades to cover a wide application area and for specific materials.



### APPLICATION RANGE

ISO P		ISO M	
PVD		PVD	
P10	MP6120	M10	
P20		M20	MP7130
P30	MP6130	M30	
P40		M40	

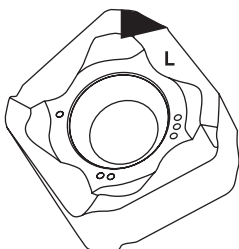


## CHIPBREAKER

Series for varied depth of cut and feeds.

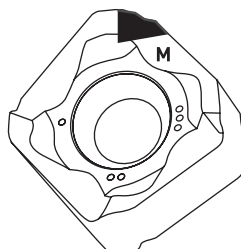
### L CHIPBREAKER

- ◆ Boosts performance with high rake angle
- ◆ Positive land retains strength and provides low cutting resistance



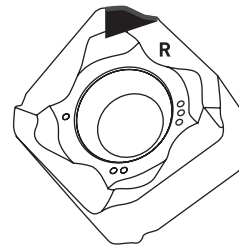
### M CHIPBREAKER

- ◆ Recommended for general applications
- ◆ Balance of cutting edge strength and sharpness with optimized positive land and rake angle



### R CHIPBREAKER

- ◆ For unstable applications
- ◆ Enhanced cutting edge strength and retained sharpness with negative land and positive rake angle





KIT ORDER NUMBER	AVAILABLE GRADES	INSERTS INCLUDED	LIST PRICE
PR-WSX445-050A04ARMM	MP6120 / MP6130 / MP7130	30 x SNMU140812ANER-M	£159.92
PR-WSX445-063A05ARMM	MP6120 / MP6130 / MP7130	40 x SNMU140812ANER-M	£213.22
PR-WSX445-080A06ARMM	MP6120 / MP6130 / MP7130	40 x SNMU140812ANER-M	£213.22

#### GRADE APPLICATION

ISO P Steel ● +

ISO M Stainless Steel ●

- Stable Cutting
- General Cutting
- ✚ Unstable Cutting

\* Offer valid while stocks last

### HOW TO FIND THE CORRECT ORDER NUMBER

1. Choose one cutter diameter, e. g. PR-WSX445-050A04ARMM
2. Choose one grade, e. g. MP6130

#### Note:

The number of included inserts depends on the selected cutter diameter

#### Your order number example:

PR-WSX445-050A04ARMM MP6130

.....Description..... Grade.....

**MMC HARDMETAL U.K. LTD.**

Mitsubishi House . Galena Close . Tamworth . Staffs. B77 4AS . U.K.  
Phone +44 1827 312312 . Fax +44 1827 312314  
Email [sales@mitsubishicarbide.co.uk](mailto:sales@mitsubishicarbide.co.uk)

**MMC HARTMETALL GMBH**

Comeniusstr. 2 . 40670 Meerbusch . Germany  
Phone +49 2159 91890 . Fax +49 2159 918966  
Email [admin@mmchg.de](mailto:admin@mmchg.de)

**MMC METAL FRANCE S.A.R.L.**

6, Rue Jacques Monod . 91400 Orsay . France  
Phone +33 1 69 35 53 53 . Fax +33 1 69 35 53 50  
Email [mmfsales@mmc-metal-france.fr](mailto:mmfsales@mmc-metal-france.fr)

**MITSUBISHI MATERIALS ESPAÑA, S.A.**

Calle Emperador 2 . 46136 Museros/Valencia . Spain  
Phone +34 96 1441711 . Fax +34 96 1443786  
Email [mme@mmevalencia.com](mailto:mme@mmevalencia.com)

**MMC HARTMETALL GMBH ALMANYA - İZMİR MERKEZ ŞUBESİ**

Adalet Mahallesi Anadolu Caddesi No: 41-1 . 15001 35580 Bayraklı/İzmir . Turkey  
Phone +90 232 5015000 . Fax +90 232 5015007  
Email [info@mmchg.com.tr](mailto:info@mmchg.com.tr)

**MMC HARDMETAL POLAND SP. Z O. O.**

Al. Armii Krajowej 61 . 50-541 Wrocław . Poland  
Phone +48 71335 1620 . Fax +48 71335 1621  
Email [sales@mitsubishicarbide.com.pl](mailto:sales@mitsubishicarbide.com.pl)

**MMC HARDMETAL RUSSIA OOO LTD.**

Electrozavodskaya Str. 24 . build. 3 107023 r. Moscow . Russia  
Phone +7 495 7255885 . Fax +7 495 9813979  
Email [info@mmc-carbide.ru](mailto:info@mmc-carbide.ru)

**MMC ITALIA S. R. L.**

Via Montefeltro 6/A . 20156 Milano . Italy  
Phone +39 0293 77031 . Fax +39 0293 589093  
Email [info@mmc-italia.it](mailto:info@mmc-italia.it)



┌

┐

└

┘